



MILESTONE INC.

Building Lives • Building Futures

MATTERS

Newsletter For The Friends & Supporters of MILESTONE, Inc.

WINTER 2016 CONTENTS



A Wonderful Reunion
3

RocVale Golf Outing
4

Holiday Wish List
5

Special Olympics Update
6

A Way To Help MILESTONE
7

Thank You Donors
8

ROCVALE'S NEW PLAYGROUND



Many volunteers and donors came together to build a new playground at Rocvale for the Children. Kids Around the World led the effort and volunteers from throughout the community worked for 4 days digging holes, spreading mulch and assembling the new playground. A special dedication and ribbon cutting with Ice Hog's Mascot Hammy the Hog leading the way marked official opening of the playground.



ROCVALE PLAYGROUND DONORS

Larry Larson Memorial Fund
Rockford Ice Hogs Charitable Foundation
BMO Harris Bank
Backyard Grill and Bar
Carol Lavin Bernick Family Foundation

IN KIND DONATION

Rockford Park District

VOLUNTEERS

BMO Harris Bank Staff
Rockford Ice Hogs Staff
Rockford Ice Hogs Boosters
Enterprise Car Rental
Youth Build
Rockford First Focus One
Kids Around the World Volunteers





FROM THE DESK OF SHAWN WAY, MILESTONE PRESIDENT AND CEO

December 2016

Friends of MILESTONE:

The Christmas holidays connote a “season of miracles”, a special time where dreams so often come true. At MILESTONE we are blessed to witness “everyday miracles”. The intellectually and developmentally disabled children and adults served by MILESTONE (and RocVale Children’s Home) are a living testament to the power of small steps, to perseverance and to the power of the extended family.

Each summer hundreds of men, women and children attend summer camp, making new friends and renewing friendships that last a lifetime, while being afforded the opportunity to swim, fish, hike and enjoy an extraordinary camp life. Once again this year, our Special Olympians competed and achieved what was once thought as impossible, bringing home medals and smiles that shine. The MILESTONE singers and dancers share with great enthusiasm their talents, at county fairs and retirement homes throughout the area, bringing great joy for those they entertain.

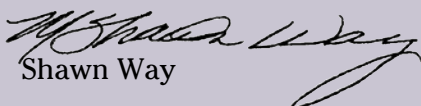
Not as visible to the general public but every bit as incredible are the results individuals achieve through the use of sensory integration programs. Occupational Therapists and MILESTONE Interdisciplinary teams utilize specialized sensory equipment to help individuals reduce problematic behaviors or reliance on certain medications, leading to achievements once thought of as impossible. The individuals achievements at MILESTONE Industries include making holiday cards, helping with newsletter distribution or working with local industry are equally incredible. And when you see the pride and joy that a bi-weekly paycheck brings to our individuals, it too is an everyday miracle.

In the end I am amazed at what our individuals achieve every day. I am equally amazed by the work of our hard-working, dedicated employees, that provide guidance, care and love to the individuals they serve. And I am amazed by you, our supporters, many of which have given of your time, talents and treasures for as many as 43 years. You help make it all possible, and for that we are all incredibly grateful.

Your giving continues to make a difference in the lives of our individuals. Your giving helps create “everyday miracles”.

My best to you and your family, and may you have a blessed 2017!

Sincerely,


Shawn Way



A WONDERFUL REUNION



Frank Kishel spent most of his life thinking his sister Susie had passed away when she was a child. He vividly remembers his mother and grandmother discussing that children with Down Syndrome do not usually live past



childhood. This was reinforced when at his father's funeral in 1997 it was stated "he was predeceased by his daughter Susie". However, when his mother died in 1999, and he was cleaning out her house he found a calendar with notes about his sister Susie, which led him to believe she was still alive. He did a check of possible places she could be living with no luck, and he tried several computer searches again with no luck. However that changed in 2014 when Amy Hanson, Frank's long time lady friend, used USA People Search and found someone in Rockford with a name close to Susie's name. Frank was shocked; the birthday listed matched the birthdate on Susie's Baptismal certificate which confirmed it was his sister. They did some more research and discovered she was living at a MILESTONE home in Rockford. Frank immediately contacted MILESTONE and discovered they had been looking for Susie's brothers since 2010. Everyone was amazed they had been able to find each other, and agreed the next

staff at his sister's home helped make it easier.



Both he and Amy were amazed when they found out Frank and Susie had so many similar interests and likes including music and art, and animals, and both believe in keeping things neat and orderly and in their place. He has made a return trip to visit and learn more about his sister. He calls Susie on a regular basis and says the staff keeps him informed about Susie and how she is doing. Frank says his biggest fear once he discovered she was alive was what her quality of life would be like. He added he could not envision anyplace better for her than her MILESTONE home, where he knows she is happy and well cared for. Frank says one of the things he is most thankful for this holiday season is the fact he was able to reunite with his sister after all these years.



step was a face to face meeting. So, Frank made arrangements to travel to Rockford from Florida to see his sister. He said the meeting was overwhelming, and added the



MILESTONE MISSION STATEMENT

"Everyone has the right to be treated with respect, to participate in community life, to develop and exercise personal competence, to have family and friends, and to make decisions in their lives." MILESTONE, Inc. exists to ensure that persons with developmental disabilities can exercise these same rights.



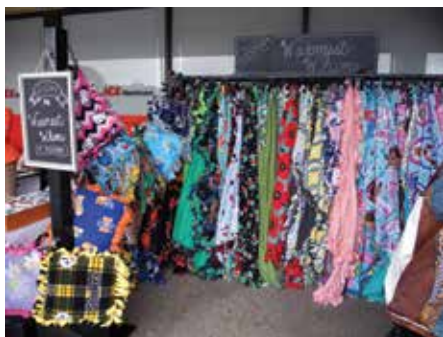
REMEMBERING A BELOVED STAFF MEMBER

Friends, family and co-workers of Roseann “ Rosie” Williams gathered at Elmwood Heights for a special dedication. A bench and yellow rose bush were placed in front of the home where Rosie worked and dedicated in her memory. Williams was killed in an accident and is missed by all who knew her.



A FALL TRADITION CONTINUES

The Artists at MILESTONE Industries enjoyed the fall weather while showing off their creations at Edgebrook’s annual Cider and Cinnamon Art Show. The theme pillows and blankets, cards and other items were a huge hit with the shoppers.



EVERYONE HAD FUN AT THE ROCVALE GOLF OUTING

The Fifth Annual Golf Play day benefitting RocVale Children’s Home and Easter Seals was a huge success raising over \$7,000 for RocVale. Joanie Eastman coordinates the entire event each year with the help of Kelly Quinlan, and makes sure everyone has a great time. The money raised at the event will be used to buy needed items for the homes at RocVale.



- THANK YOU HOLE SPONSORS**
- Rockford Bank and Trust
 - Arles Hendershott
 - HMC Products
 - American Percision/Pat Sharp
 - DiBenedetto and Associates
 - RK Dixon
 - Joey Lovgren/Ameriprise
 - Agnew Law Office
 - Burkhart Family Foundation
 - Bobbie Holzwarth & Norm Lindstedt
 - Kelley Quinlan and Jim Yagen
 - Swanson Discount Vacuum
 - Bill Olsen
 - Dixon Midas
 - Viking Chemical
 - The Stables
 - Bonnell industries
 - DeKalb Elks Club
- HOLE IN ONE SPONSOR**
- Williams Manny





HELP MAKE THE HOLIDAYS BRIGHTER

Just like many people this time of year, the staff at MILESTONE makes a “Wish List”, which includes items that are needed to insure the Individuals in our care continue to receive the highest level of care possible while working towards reaching their highest potential. Many items on the list each year become reality thanks to the continued support of the entire community. Most of MILESTONE’s revenue comes from contracts with the State of Illinois to provide both care and services to our Individuals. For over 9 years we have struggled to maintain our high quality of care without any adjustment for inflation or increasing prices in the state contracts and longer and longer delays in payment. Support from the community has allowed us to maintain our levels of care. This is only a look at some of the items we hope will be in Santa’s bag for MILESTONE.

MILESTONE’S HOLIDAY WISH LIST



ROCVALE CHILDREN’S HOME

- Outdoor Sensory Equipment \$10,000
- Outdoor Sensory/Play Water Fountain \$5,000
- New Furniture 5 homes @ \$4,000 \$20,000

MILESTONE DENTAL CLINIC

- Parking Lot Repair and Repaving \$40,000
- New Roof \$30,000
- Waiting Room Furniture 2 loveseats and 12 Chairs \$10,000

AGENCY WIDE

- 12 and 15 passenger vans 5 @ \$30,000 \$150,000
- Robo-Coupe Commercial Food processor 2 @ \$1900 \$3,800
- AED Training Units \$2,000
- Smart Board and stand for Training room \$6,100
- Standing cooler for main kitchen \$32,000

MILESTONE INDUSTRIES

- Various Educational materials \$3,000
- Parking Lot Blacktop \$100,000

ELMWOOD EAST

- Enclosed patio \$10,500
- Outdoor water/sensory fountain \$5,000



ELMWOOD HEIGHTS SPECIALIZED CARE FACILITY

- 40 Slings for EZ Lifts @ \$275 \$11,000
- Sensory Equipment 6 homes @ \$5,000 \$30,000
- Adaptive Swing Set with Wheel Chair Swing \$8,000
- Medical Equipment \$10,000
- Patio Door replacements for homes \$40,000
- Bedroom/ bathroom remodels and upgrades in each home 6 @ \$10,000 \$60,000
- 6 replacement doors \$21,500
- Parking lot lights \$40,000

ADULT GROUP HOMES

- Washer and Dryer 6 @ \$1,000 \$6,000
- Exercise equipment \$2,550
- Portable E-Z Lifts \$3,000
- New Furniture 10 homes @ \$4,000 \$40,000
- Carports at 2 group homes \$11,000
- Van Stairs 5 @ \$200 \$1,000
- Slings for EZ-stand 3 @ \$350 \$1,050
- Screened Porch or 3 season room at 1 Group Home \$7,000
- 4 iPads @ \$400 \$1,600
- Patio \$1,500
- Support railing \$3,000



MILESTONE TRAINING CENTER

- Go Pro Camera \$500
- Sensory equipment 12 classrooms @ \$3,000 \$36,000
- Outside recreation area upgrades \$2,000



SPECIAL OLYMPICS UPDATE

IT HAS BEEN A BUSY FALL FOR MILESTONE ATHLETES

BOWLING

- 60** athletes
- 10** gold medals
- 8** silver medals
- 11** bronze medals
- 9** 4th place ribbons

VOLLEYBALL

- 2** teams
- All** received second place medals.

ENJOYING A GOLF PLAYDAY

25 MILESTONE Special Olympic golfers polished their skills during a Playday at Aldeen Practice Center. Volunteers worked with each one and helped them polish their golf skills.

COMPETING IN HOCKEY FOR THE FIRST TIME

Six MILESTONE athletes competed in Lincolnshire in the hockey skills meet. This is the first time MILESTONE has taken part in Hockey competition, but it won't be the last.

STATE OUTDOOR GAMES

GOLF

- 2** golfers
- 1** gold
- 1** fourth

RAMP BOWLING

- 15** bowlers
- 6** gold
- 4** silver
- 3** third



SAVE THE DATE
MILESTONE, INC.
Third Annual Monster Cup
Golf Play Day
June 2017
The Mauh Nah Tee See Club



SAYING GOODBYE TO SUMMER

Many of the Individuals at MILESTONE enjoy going to the church of their choice on Sunday. The group who attend Rockford First welcomed fall and said goodbye to summer in a special way. The celebration put smiles on everyone's faces.





CORRECTIONS OFFICERS HELP CHILDREN AT ROCVALE GET READY FOR SCHOOL

Winnebago County Corrections Officers and their mascot CJ delivered back packs and boxes of school supplies to the children at RocVale so they would have everything they



needed for the start of the new school year. The children were excited about both the new backpacks and the visit from CJ.

JOINING THE FIGHT AGAINST BREAST CANCER



Once again Lenny was the team leader for MILESTONE'S "MAKING STRIDES AGAINST BREAST CANCER" Team. The group raised money for the fight against cancer and took part in the annual walk.

WAYS TO HELP MILESTONE

THERE ARE 2 WAYS YOU CAN HELP MILESTONE WHILE YOU SHOP

HELP MILESTONE EVERY TIME YOU SHOP AT AMAZON.COM



Amazon.com now has a new website that allows shoppers to choose a charity and when they shop a portion of every purchase is donated to that group. All you have to

do is visit the new site, www.smile.amazon.com, and select MILESTONE, Inc. as your charity of choice. After you register you will receive an e-mail verifying your choice. Then the next time you want to shop at Amazon simply use the www.smile.amazon.com site and a donation will be made to MILESTONE.

HELP MILESTONE EVERY TIME YOU GROCERY SHOP



Help MILESTONE every time you shop at Schnucks through the eScrip Community Card program. All you have to do is pick up a free card at Schnucks, register

the card and designate MILESTONE as the non profit organization you want to help. Then give the card to the cashier when you check out. Each time you shop Schnucks will contribute up to 3% of your grocery bill to MILESTONE, at the same time you will earn a 10cent a gallon discount for every \$100 spent on gas purchased at Kelley Williamson.

MILESTONE, Inc. is a 501 (c)(3) Illinois not-for-profit organization. MILESTONE Matters is developed to inform the public of the program services we offer to developmentally disabled citizens from Northern Illinois. To learn more about MILESTONE and the individuals we serve, please call (815) 654-6100.

President and CEO: M. Shawn Way
MILESTONE Matters Editor: Arles Hendershott
Copyright ©2016 by MILESTONE, inc.

EMPLOYEE ANNIVERSARIES

10 years

Michael Sharp October
Gene Engelkes November
Dorreen Ballard November
Garen Kloster December

15 years

Robelys Batista October
Keri Johnson October
Patrice Neely October
Bridget Redig October
Laura Van October

20 years

Bonita Dismuke December

25 years

Emma Jenkins October

30 years

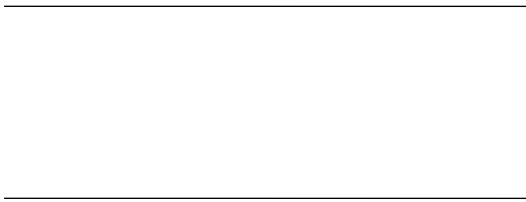
Beth Eichstedt October



Non-Profit Organization
US Postage
PAID
Permit #640
Rockford, IL

4060 McFarland Road
Rockford, IL 61111

Address Service Requested



GRANT PROVIDES FUNDING FOR ROCVALE'S BOY SCOUT TROOP

A generous grant from the William S. Howard Charitable Trust will continue to provide funding for the Boy Scout program at RocVale Children's Home. The program provides many educational and social opportunities for the boys who enjoy the many activities. The William S. Howard Charitable Trust was established in 1982 as the charitable component of the companies of William Charles, Ltd., together they comprise one of the largest, locally owned companies in the region.

MICHAEL BURJA MEMORIAL SCHOLARSHIPS AWARDED

Liz Sanders and Haley Franks are the recipient of this year's Michael Burja Memorial Education Scholarships. The scholarship was established by the Burja family in memory of their son, Michael, who was part of the Elmwood Heights family for over 7 years. MILESTONE employees who are perusing a degree in a health care related field are eligible to apply for the scholarship.

THANK YOU TO THE VENETIAN CLUB

The Venetian Club sponsored this year's End of Summer bash at Elmwood Heights. The event is something the Individuals look forward to every year and is possible because of the generous support of donors.